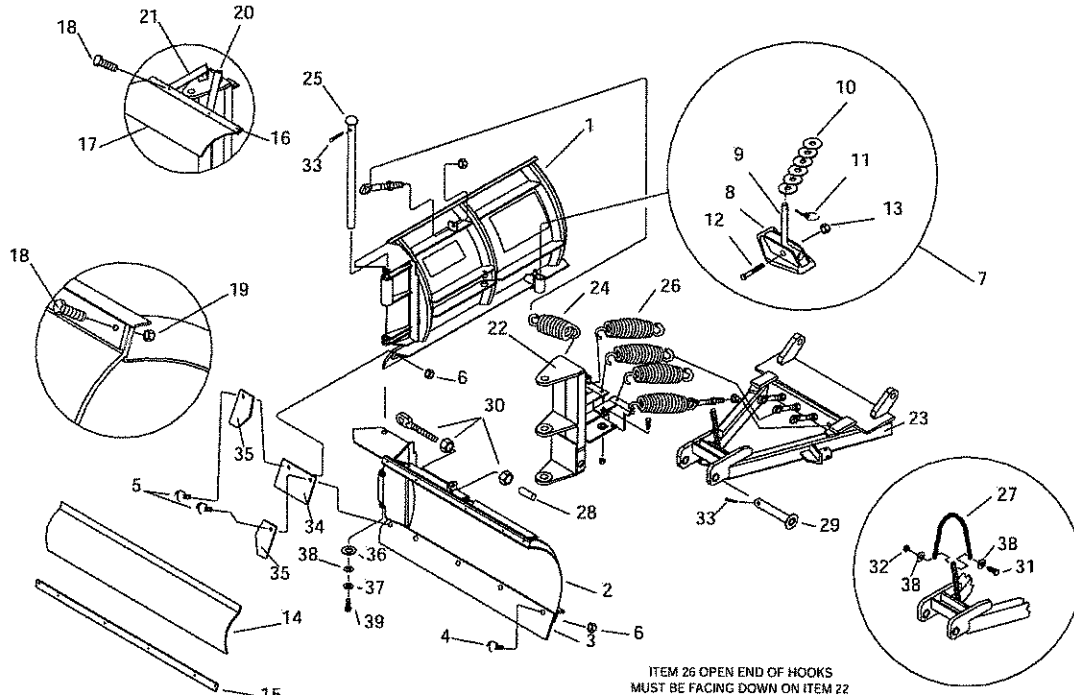


Parts & Installation Instructions MDII™ "Vector" 8.5' Snow Plow



Parts List

Item	8.5	Qty.	Description	Item	8.5	Qty.	Description
	09258	2	Moldboard R.H. & L.H. Wing	22	16525	1	A-Frame and Pivot Carton
1	09254	1	• R.H. Wing	23	13625	1	• Pivot Assembly
2	09255	1	• L.H. Wing	24	07178	2	• A-Frame
3	09259	1	• Cutting Edge (2 sections)	25	07069	1	• Wing Spring
	08692	1	• Hardware Bag	26	07216	4	• Hinge Pin
4	21961	8	•• Bolt C 1/2-13 x 2 Gr. 5	27	8511002008040	1	• Trip Spring
5	22066	2	•• Bolt C 1/2-13 x 2-3/4 Gr. 5		09916	1	• Plow Marker Kit
6	20307	10	•• Locknut 1/2-13			1	• Lift Chain
7	09126	2	• Runner & Spindle Assembly	28	08775	1	• Hardware Bag
8	07006	1	•• Runner	29	07031	6	•• Eye Bolt Cap
9	12057	1	•• Spindle	30	09124	6	•• Pivot Pin
10	20363	10	•• Flatwasher 1-1/4"	31	20073	1	•• Eye Bolt w/Locknut
11	22083	1	•• Linch Pin	32	20306	1	•• Bolt H 7/16-14 x 1-1/2"
12	20101	1	•• Bolt H-1/2-13 x 3"	33	20306	1	•• Locknut 7/16-14
13	20307	1	•• Locknut 1/2-13	34	20421	2	•• Cotter Pin 1/4" x 2-1/4"
	12170	1	Snow Deflector KIT (OPTIONAL)	35	12198	1	•• V-Plow Center Edge
14	12189	2	• Deflector	36	12381	2	•• Center Plate
15	12191	2	• Bar	37	20357	1	•• 5/8 Flatwasher
16	12277	1	• Reinforcement Bar	38	20328	1	•• 7/16 Lockwasher
17	12285	1	• Center Deflector & Decal	39	20354	3	•• 7/16 Flatwasher
	08691	1	• Hardware Bag		20072	1	•• Bolt H 7/16-14 x 1-1/4"
18	20006	18	•• Bolt H 1/4-20 x 1-1/4"		07996	1	•• Cable Tie
19	20312	18	•• Nut, Eslok 1/4-20				
20	12275	2	•• Angle				
21	12276	2	•• Deflector Extension				

Parts indented are included in the carton, bag or assembly under which they are indented.

Meyer Products and Diamond Equipment reserves the right, under its continuing product improvement program, to change construction or design details, specifications and prices without notice or without incurring any obligation.

Meyer Products
 18513 Euclid Ave. • Cleveland, Ohio 44112-1084
 Phone 486-1313 (Area Code 216)
 email warranty@meyerproducts.com



Diamond Equipment
 #6 Angell Lane • Damariscotta, ME 04543-9720
 Phone 563-2227 (Area Code 207)
 www.diamondplow.com • email info@diamondplow.com

INSTALLATION INSTRUCTIONS

Note: The following instructions cover assembly of Moldboard Wings, Pivot Assembly and A-Frame. Refer to separate instructions for installation of plow mounting and hydraulic system.

- A. Assemble Pivot Assembly (22) to A-Frame (23) using Pivot Pin (29) and Cotter Pin (33). **Note: Liberally coat Pivot Pin with a chassis grease/anti-seize lubricant.**
- B. Assemble Eye Bolts W/Locknut (30) to Trip Springs (24&26). Install four Trip Springs (26) onto Pivot Assembly (22). (Open end of hooks must be facing down on pivot assembly.)
- C. Guide Eyebolts into A-Frame (23) Attach Eye Bolts (30) to A-Frame (23),
- D. Make certain each Eye Bolt (30) is in a vertical position as shown in figure 1 so that the Eye Bolt (30) and Trip Spring (26) hinge properly when moldboard trips.

Note: Proper tension is attained when Trip Spring (26) coils just begin to separate and then tightening top locknut four additional turns.

- E. **IMPORTANT : PIVOT ASSEMBLY MUST BE TIGHT AGAINST A-FRAME STOP.**
- F. Assemble L.H. & R.H. Wings to Pivot Assembly using Hinge Pin (25), Washer 5/8 (36), Lockwasher 7/16 (37), Washer 7/16 (38) and Bolt H 7/16-14 x 1-1/4" (39).
- G. Install Power Angling Rams per separate instructions.
- H. Install Wing return Springs (24) using Eyebolts (30) and adjust springs to proper tension.

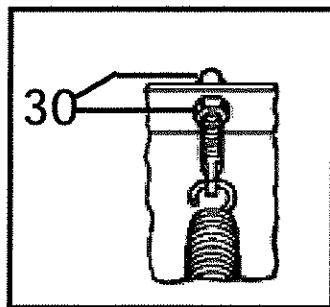


Figure 1